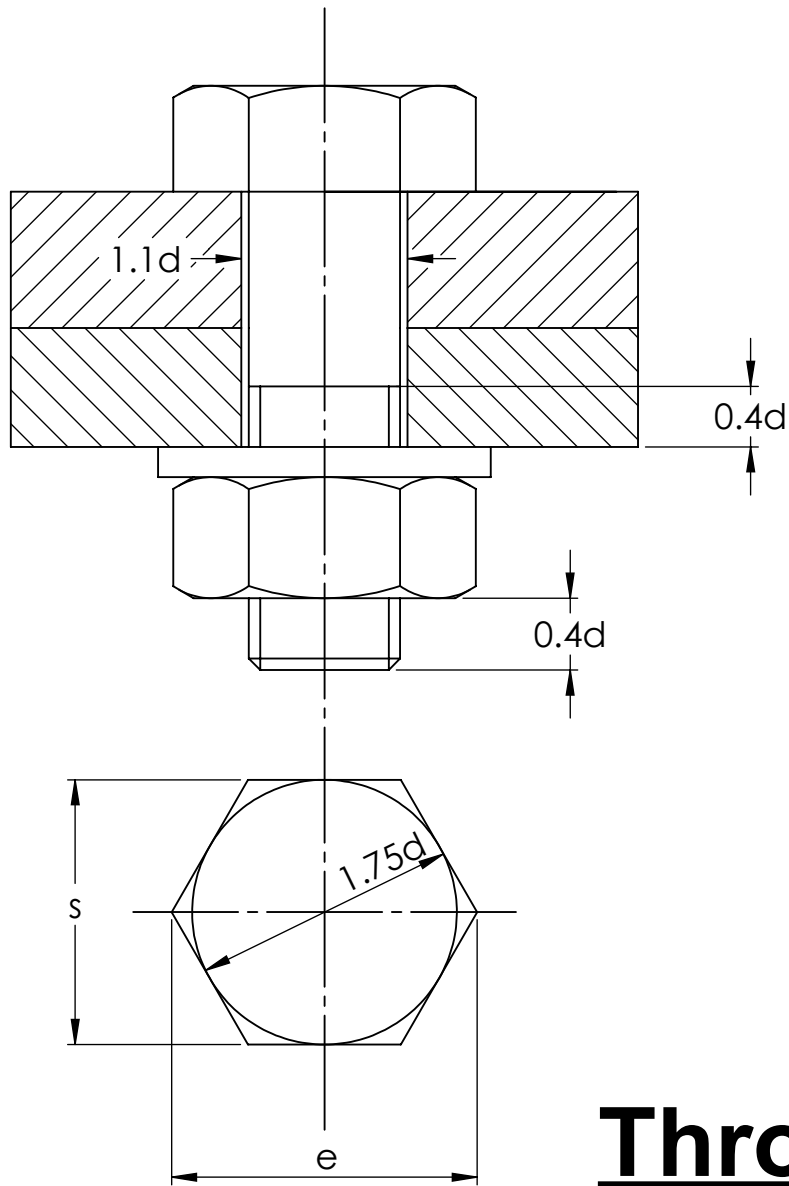


Fasteners Bolts

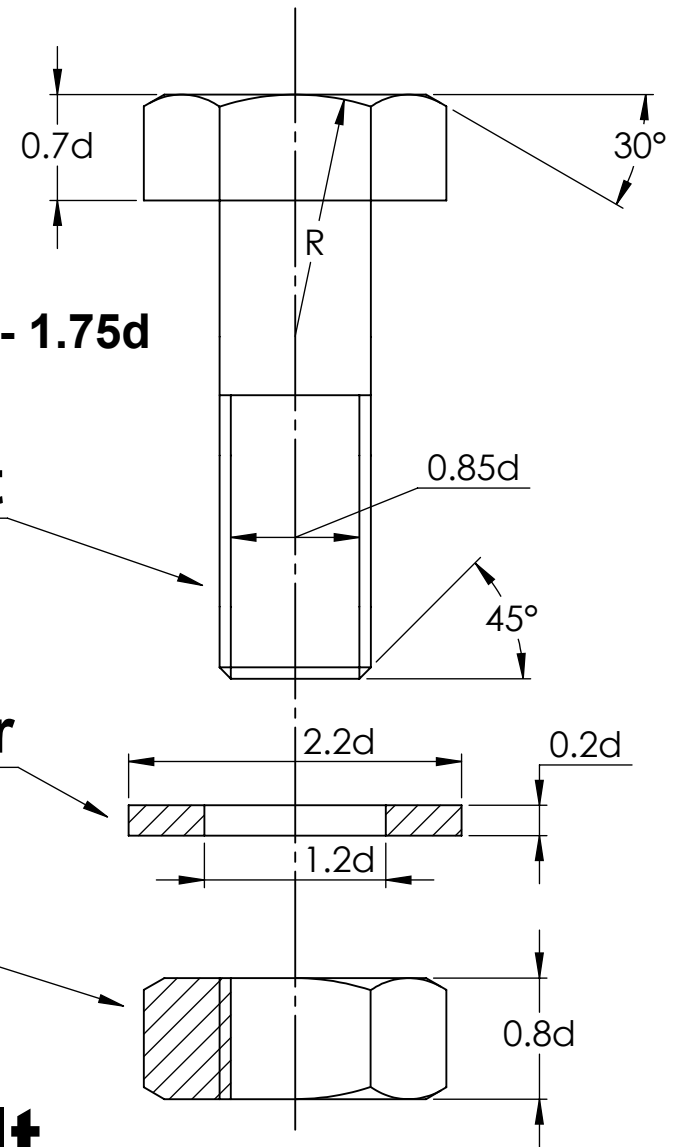


$$R = 1.5d - 1.75d$$

Bolt

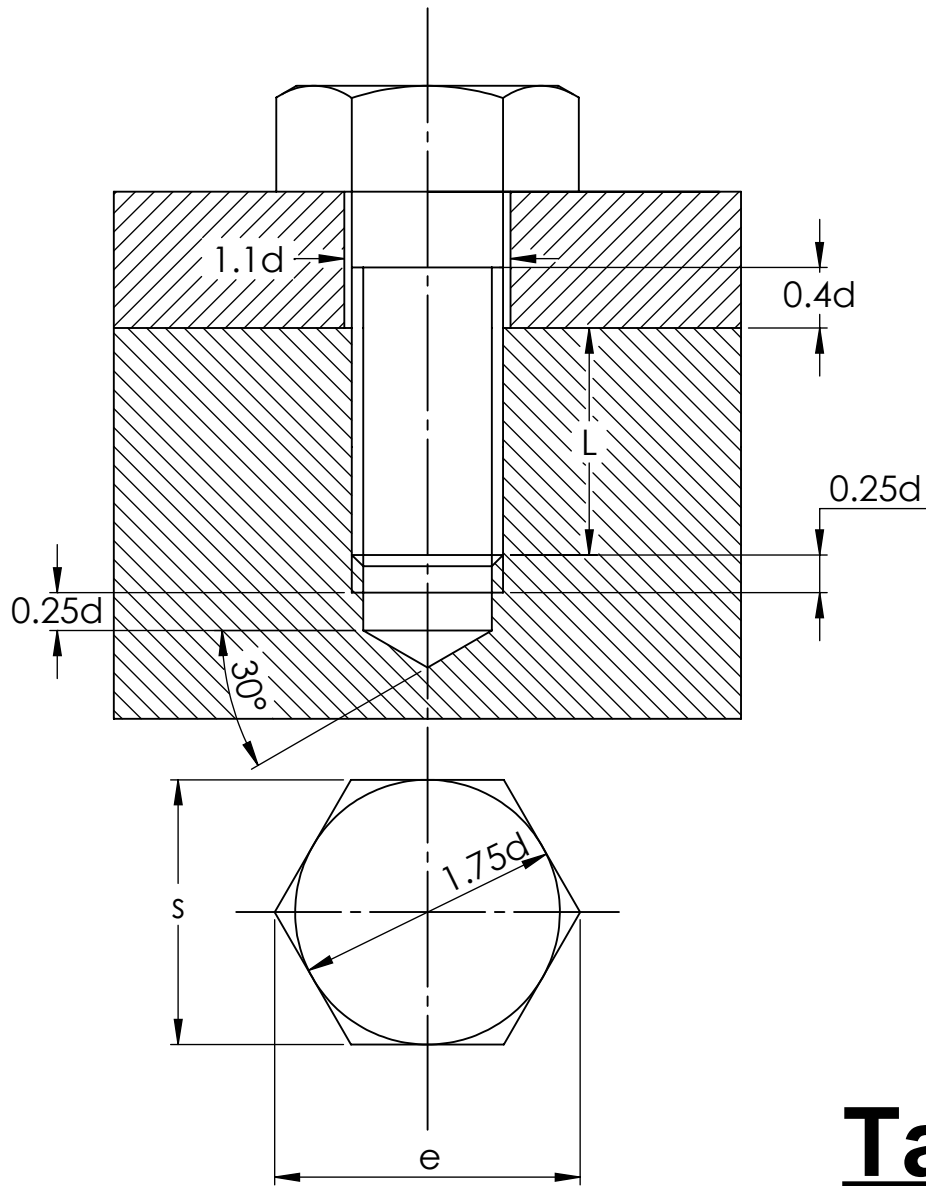
Washer

Nut



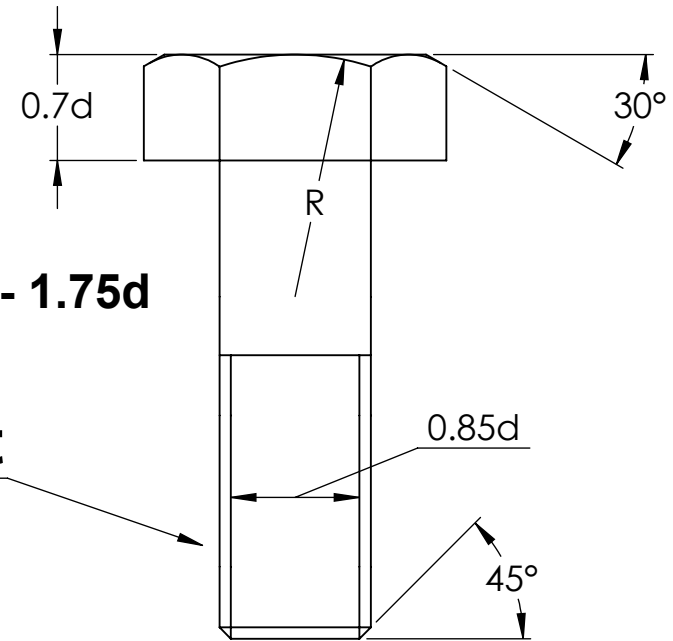
Through Bolt

Fasteners Bolts



$$R = 1.5d - 1.75d$$

Bolt



$L = d$ for Steel
 $L = 1.5d$ for Cast Iron (C.I.)

Tap Bolt

Technical drawing of a bolted joint showing side and top views with dimensions.

Side View Dimensions:

- $0.4d$: Dimension for the hexagonal head of the bolt.
- $1.1d$: Dimension for the width of the flange of the nut.
- L : Length of the bolt shank.
- $0.25d$: Dimension for the thickness of the flange of the nut.
- 30° : Angle of the bolt shank.

Top View Dimensions:

- s : Distance from the center of the bolt to the corner of the hexagonal head.
- e : Distance from the center of the bolt to the corner of the hexagonal head.
- $1.75d$: Dimension for the width of the hexagonal head.

Material Specifications:

- $L = d$ for Steel
- $L = 1.5d$ for

$L = 1.5d$ for Cast Iron (C.I.)

Washer

Stud Bolt